



شركة سما المتخصصة المحدودة
Sky Specialized Co. Ltd



COMPANY PROFILE

SKY SPECIALIZED CO. LTD

Al Corniche Road,
Ash Shati District,
P.O. Box 10214, Jeddah 21433
Kingdom Of Saudi Arabia
Tel: + 966 126 949 974
Tel: + 966 126 990 162

Email : info@skyspecialized.com
Website: www.skyspecialized.com

Contents

About Sky Specialized Co. Ltd.	6
SKY SPECIALIZED CO. LTD.....	8
Quality Health & Safety, Environment Policy Statement	9
ISO Certifications 9001:2015	10
ISO Certifications 14001:2015	11
ISO Certifications 45001:2018	12
5. SERVICES :	13
5.1 Industrial & Public Construction.....	13
5.2 Concrete Repairs.....	13
5.3 Structural Strengthening.....	13
5.4 Testing & Evaluation	14
5.5 Injection & Grouting	14
5.6 Protective Coating	14
5.7 Specialty Services.....	14
INDUSTRIAL & PUBLIC CONSTRUCTION	15
PROJECTS CASE STUDIES & APPLICATION PICTURES.....	15
MODIFICATION AND CONSTRUCTION WORKS IN GLOBAL GYPSUM FACTORY	16
Yanbu (Member of Lafarge international group) 2014 / 2017	16
DEVELOPMENT OF LOAD CENTRE 1.....	17
King Abdulaziz International Airport in Jeddah 2010.....	17
APPLICATION OF FIRESTOP SYSTEM (PFP – CANADA).....	18
EXTENSION OF LOAD CENTRE 2 & 3	19
King Abdulaziz International Airport in Jeddah 2009.....	19
NEW CABLE ROUTING FOR THE 400 HERTZ PROJECT.....	20
King Abdulaziz International Airport in Jeddah 2011.....	20
DEVELOPMENT OF SITTING AREAS AND TOILET UNITS.....	21
Hajj Terminal-King Abdulaziz International Airport Jeddah 2008.....	21
RENOVATION AND DEVELOPMENT OF TOILET UNITS AT THE DOMESTIC ARRIVAL AREA	22
CONCRETE REPAIRS	23
PROJECTS CASE STUDIES & APPLICATION PICTURES.....	23
CONCRETE REPAIR OF SEVEN CELLS AT LOAD CENTRE #4.....	24

King Abdullah Air Base in Jeddah 2009	24
RENOVATE AND REPLACE AS REQUIRED CIVIL & MECHANICAL WORKS IN THE MAIN RESERVOIR TANKS	25
King Abdulaziz International Airport in Jeddah 2012.....	25
REPAIR OF DAMAGED CONCRETE COLUMNS OF NORTH TAXI TAXIWAY BRIDGES OF JAK 01, 02, 03, 04 AND MAINTENANCE OF WATER DRAINING SYSTEM	26
King Fahd International Airport in Dammam 2012.....	26
REPAIR OF FLOOR SLABS, BEAMS AND CEILING OF TERMINAL PARKING GARAGE.....	27
King Fahd International Airport in Dammam 2014.....	27
REPAIR OF DETERIORATED CEILING OF A TUNNEL	28
King Fahad International Airport in Dammam 2014.....	28
REHABILITATION OF KFIA CENTRAL PLANT (COOLING TOWERS)	29
King Fahad International Airport in Dammam 2014.....	29
REPAIR OF ELECTRICAL ROOM CEILING AND PROVISION OF WATER DRAINAGE SYSTEM	30
King Fahad International Airport in Dammam 2014.....	30
SLOPE STABILIZATION USING THE SHOTCRETE	31
Mena (Makkah) 2008.....	31
CONCRETE REPAIR OF HARAM EXPANSION BUILDINGS.....	32
Haram Expansion Buildings in Makkah 2014	32
CONCRETE REPAIR OF SAFARI HOTEL BASEMENT GARAGE	33
Jeddah 2009	33
REPAIR OF JOINT SEALANT AT 5 APRONS IN KAIA.....	34
King Abdulaziz International Airport 2022.....	34
REPAIR OF FGD & MSF STRUCTURES AT SWEC POWER PLANT IN SHUAIBAH 2020.....	37
REINSTATEMENT OF BRIDGE UPPER RISER OF POT BEARING	39
Royal Commission in Yanbu 2013	39
REPAIR OF SIDE WALLS	40
Al-Salam underpass, Jeddah 2015	40
REPAIR OF R.C. IN ELEVATOR SHAFTS OF HIGH-RISE BUILDING	41
High-rise residential building, Jeddah 2013.....	41
CONCRETE REPAIR OF STRUCTURAL MEMBERS AT AL KAAKI COMMERCIAL BLD. Jeddah 2016	42
STRUCTURAL STRENGTHING & UPGRADING.....	43
BRIDGE EXPANSION JOINTS & LIFTING OF BRIDGE FOR REPAIRS.....	43
PROJECTS CASE STUDIES & APPLICATION PICTURES.....	43
Installation of 2000 Linear Meters Of Expansion Joints for Bridges KAIA Development Project Phase-1 J-10-422-PF-0 Jeddah 2013.....	44
Hamdania Bridge - Lifting Of Bridge to Repair the Plinths	48

Internal Post Tension & Post Tension for Bridge Girders	50
STRENGTHENING OF STRUCTURAL MEMBERS USING CFRP WARPS AT DESALINATION PLANT	57
SWCC, Yanbu 2016.....	57
STRENGTHENING OF CONCRETE BEAMS BY INSTALLATION OF CFRP LAMINATES	58
Mahmood Saeed Mall, Jeddah 2014.....	58
REHABILITATION & RENOVATION.....	59
Private villa, Jeddah 2009	59
REHABILITATION OF LOAD CENTER NO.4	60
King Abdul Aziz international airport, Jeddah 2008.....	60
INJECTION & GROUTING PROJECTS CASE STUDIES & APPLICATION.....	62
PICTURES.....	62
INJECTION OF FOAMING MATERIAL TO STOP LEAKING WATER	63
Mall basement, Jeddah 2013	63
REPAIR OF GRP PIPES' LEAKING JOINTS.....	64
Rabigh Power Plant, Rabigh 2016	64
SOIL MITIGATION MEASURES IN SELECTED FACILITIES	65
@Acwapower RABEC 2022	65
SOIL MITIGATION MEASURES AT RABEC FACILITIES.....	67
RABEC 2019.....	67
SOIL MITIGATION MEASURES IN SELECTED FACILITIES @ RABEC PLANT – PHASE 2 ACWAPOWER RABEC 2022	70
PROTECTIVE COATING & WATERPROOFING.....	73
PROJECTS CASE STUDIES & APPLICATION PICTURES.....	73
WATERPROOFING OF SOJECO POTABLE WATER TANKS.	74
Tank A @Obhur and Tank B @ South Corniche Jeddah 2022	74
APPLICATION OF EPOXY FLOORING, SCREEDING, WATERPROOFING AND JOINT WORK @ BERAIN WATER FACTORY - Jeddah 2023	79
APPLICATION OF PROTECTIVE COATING SYSTEM TO DIFFERENT	85
BRIDGES - Makkah 2015	85
APPLICATION OF PROTECTIVE COATING SYSTEM TO SHAFTS.....	86
Main Sewage Station, North Jeddah 2012.....	86
WATERPROOFING OF THE NORTH TERMINAL ROOF	87
King Abdulaziz International Airport, Jeddah 2012	87
WATERPROOFING & REFURBISHMENT WORKS AT THE FRENCH CONSULATE - Jeddah 2016	88
SPECIALTY SERVICES PROJECTS CASE STUDIES & APPLICATION PICTURES	89
DESALINATION PLANT PIPES NETWORK EXPANSION	90
Yanbu 2012.....	90

STATION 1 - HDPE NETWORK REPLACEMENT	91
King Abdulaziz International Airport, Jeddah 2012	91
UPGRADING OF AIR HANDLING PLENUMS AT THE NORTH & SOUTH TERMINALS,	92
King Abdulaziz International Airport, Jeddah 2014	92
INSTALLATION OF 200 MM-HDPE FIRE WATER PIPE FOR THE SOUTH TERMINAL EXTENSION BUILDING,.....	93
King Abdulaziz International Airport, Jeddah 2014	93
REPLACEMENT OF SKYLIGHT GLASS AT THE NORTH TERMINAL	94
King Abdulaziz International Airport, Jeddah 2014	94
REPLACEMENT OF 7 AC PACKAGES AT THE SOUTH TERMINAL.....	95
King Abdulaziz International Airport, Jeaddah 2014.....	95
INSTALLATION OF FLOW METERS.....	96
King Abdulaziz International Airport, Jeddah 2014	96
CUTTING AND REMOVAL OF REINFORCED CONCRETE MEMBERS OF BRIDGES	97
Bridge GSE 06 and Bridge GSE 07 in Dammam 2011	97
MAINTENANCE OF SNB HQ FAÇADE.....	98
JEDDAH 2022.....	98
CORING & CUTTING SAFA PALACE PROJECT.....	101
Safa Palace Retaining Wall Cutting Project - Makkah.....	101
MEMBERSHIP & CERTIFICATES	114

About Sky Specialized Co. Ltd.

Sky Specialized Co. Ltd. has been established by merger of “**Sky Jeddah For Construction Co. Ltd.**” and “**Noor Trading & Contracting Est.**”.

The two companies decided to join their forces, prolonged experience, successful project portfolios and business reputation achieved with clients in public, residential, commercial and industrial sectors across the kingdom for the past 40 years. Our decades of proven performance and unparalleled expertise have made Sky Specialized Co. one of the most reliable and respected company.

Sky Specialized Co. Ltd. will continue offering its services in providing the State-of-the-art Engineering solutions and services in Concrete rehabilitation , Protection , Structural Strengthening , Soil stabilization underpinning , Structural Health Monitoring , Ground Geophysical Surveys , Condition assessment & Root Cause Analysis of Structural defects & ground settlements , Leak Repair , Concrete Coring and Cutting, Demolition Solutions, Fire stopping and Fireproofing solutions & Industrial floorings solutions.

Sky Specialized Co. Ltd. has been established to respond to the growing demand of Vision 2030 which requires the forces of different disciplines to join in stronger entities that can offer the innovative services to the level of the vision requirements and global standards.

A strong, customer focused approach, confirmation to global QHSE standards and the constant quest for high quality enabled the company to new standards.

Our team include, highly skilled and experienced professionals ranging from project managers, technical engineers, safety experts, site supervisors, foreman's and all skill sets necessary to deliver outstanding quality and value to all our clients.

Creating New Values

Our clients and partners represent some of the largest and most established companies and government agencies in the Kingdom Of Saudi Arabia and Gulf Region. Using our combined experience, technical expertise and local knowledge, we are able to deliver projects and services that contribute to the community, our economy and future generation. Delivers quality projects to world class standards.

SKY SPECIALIZED CO. LTD.



"Is supporting and walking with Saudi vision 2030. Our vision is to become a market leader in the development and implementation of innovative mitigation solutions for structural and soil defects".



"Is to be recognized by its client as a Pioneer in its specialties".



Safety, Honesty, Integrity,
Quality, Service, Team Work

Quality Health & Safety, Environment Policy Statement

SKY SPECIALIZED CO. LTD. (SSCL) is involved in the Safety and health of people and the protection of environment as a key factor while meeting its strategic objectives to increase the standard level and quality of its supplied products and services in order to satisfy the customer needs.

The Management and Staff of **SKY SPECIALIZED CO. LTD. (SSCL)** are committed to:

- Establish, implement and maintain a QHSE Policy that is appropriate to the purpose and context of the organization and supports its strategic direction;
- The continual improvement for its Safety, Health, Environmental and Quality performance standards and to protect the environment and the associated health and safety of its employees, customers, suppliers, and the public. Only through the cooperative effort of all can the best possible QHSE record be achieved
- Provide and maintain safe, environmental and healthy working conditions for all our employees, who are the company's most valuable asset.
- Appropriate objectives and targets are established and QHSE management programs are formulated.
- Consult, communicate and collaborate with employees and other stakeholders on QHSE matters and QHSE Performance
- The continual improvement for its Safety, Health, Environmental and Quality performance standards and to protect the environment and the associated health and safety of its employees, customers, suppliers, and the public.
- Prevent injury and ill health to its employees and other interested parties by Eliminating hazards and reducing OH&S risks
- Provide appropriate tools, equipment, operational processes, safe system of work covering all our activities and support reasonably required to ensure success.
- Prevent incidents, accidents, injuries, illnesses, environmental impacts and provide high quality products.
- Where there are risks to safety, health and environment, Aspects need to be assessed under specific duty or regulations. We will ensure that our assessments are carried out and that all actions shown to be necessary will be implemented.
- Comply with the applicable local and federal regulations, customer requirements and to maintain a safe and pollution-free operating practice that complies with the applicable KSA legal and other client requirements.

SKY SPECIALIZED CO. LTD. (SSCL) communicates this policy to all employees through training and daily management activities, both to ensure their understanding and to ensure that the policy is properly upheld. Our policy is made available to relevant interested parties upon request.

Approved By GM:

Mr. Fadi Al Sabbagh

ISO Certifications 9001:2015



Certificate of Registration

This is to certify that

SKY SPECIALIZED CO. LTD.

AT

**AL JUHD AL MUKHLIS STREET, AL ANDALUS DISTRICT,
P.O.BOX 10214 JEDDAH 21433, KINGDOM OF SAUDI ARABIA**

has been assessed and certified by Vatsin Certification as meeting the requirements of

ISO 9001 : 2015

(Quality Management System)

For the following activities

CONCRETE REPAIR & STRUCTURAL STRENGTHENING: REPAIR OF DETERIORATED
CONCRETE, CRACKS, JOINTS SEALING, REPAIR OF LEAKAGE, CATHODIC PROTECTION,
OLD BUILDING RESTORATION, STRENGTHENING BY SECTION ENLARGEMENT, CFRP/GFRP
WRAPS AND LAMINATES, CONDITION ASSESSMENT: STRUCTURES & ME FACILITIES,
HISTORICAL BUILDINGS, SOIL CONDITION ASSESSMENT, STRUCTURAL HEALTH MONITORING,
STRENGTHENING BY POST TENSIONING (PTI), SOIL MITIGATION: PERMEATION GROUTING,
COMPACTING GROUTING, UNDERPINNING, OTHER SPECIALTIES: FIRE-STOPPING &
FIREPROOFING, POLYUREA LINING, STONE FACADE MAINTENANCE AND RENOVATION,
CORING AND CUTTING

IAF CODE - 28, 34 & 35

Certificate No : VC23018560

To verify this certificate please visit at www.vatsincertification.com

Date of Initial Registration : 26-11-2025	Revision No. : 00
Re-Certification Due : 25-11-2028	1st Surveillance : 25-11-2026
2nd Surveillance : 25-11-2027	Certificate Expiry : 25-11-2028



MEMBER OF MULTILATERAL
IAF
RECOGNITION ARRANGEMENT
MSCB-291



IAS
ACCREDITED
Management Systems
Certification Body





**Authorised
Signatory**

VATSIN CERTIFICATION PRIVATE LIMITED
*Accredited by IAS (International Accreditation Services, Inc.)
(3060 Saturn Street, Suite 100, Brea, California 92821 United States of America)*

* Validity of the Certificate is subject to successful completion of surveillance audit on or before of due date. (in case Surveillance audit is not allowed to be conducted, this certificate shall be suspended/cancelled)
* Certificate is the Property of VATSIN CERTIFICATION and shall be returned immediately when demanded.
* E-mail : info@vatsincertification.com Website : www.vatsincertification.com

ISO Certifications 14001:2015



Certificate of Registration

This is to certify that

SKY SPECIALIZED CO. LTD.

AT

AL JUHD AL MUKHLIS STREET, AL ANDALUS DISTRICT,
P.O.BOX 10214 JEDDAH 21433, KINGDOM OF SAUDI ARABIA

has been assessed and certified by Vatsin Certification as meeting the requirements of

ISO 14001 : 2015

(Environmental Management Systems)

For the following activities

CONCRETE REPAIR & STRUCTURAL STRENGTHENING: REPAIR OF DETERIORATED CONCRETE, CRACKS, JOINTS SEALING, REPAIR OF LEAKAGE, CATHODIC PROTECTION, OLD BUILDING RESTORATION, STRENGTHENING BY SECTION ENLARGEMENT, CFRP/GFRP WRAPS AND LAMINATES, CONDITION ASSESSMENT: STRUCTURES & ME FACILITIES, HISTORICAL BUILDINGS, SOIL CONDITION ASSESSMENT, STRUCTURAL HEALTH MONITORING, STRENGTHENING BY POST TENSIONING (PTI), SOIL MITIGATION: PERMEATION GROUTING, COMPACTING GROUTING, UNDERPINNING, OTHER SPECIALTIES: FIRE-STOPPING & FIREPROOFING, POLYUREA LINING, STONE FACADE MAINTENANCE AND RENOVATION, CORING AND CUTTING

IAF CODE - 28, 34 & 35

Certificate No : VC23026011

To verify this certificate please visit at www.vatsincertification.com

Date of Initial Registration : 26-11-2025

Re-Certification Due : 25-11-2028

2nd Surveillance : 25-11-2027

Revision No. : 00

1st Surveillance : 25-11-2026

Certificate Expiry : 25-11-2028



MSCB-291




Authorised
Signatory

VATSIN CERTIFICATION PRIVATE LIMITED

Accredited by IAS (International Accreditation Services, Inc.)
(3060 Saturn Street, Suite 100, Brea, California 92821 United States of America)

* Validity of the Certificate is subject to successful completion of surveillance audit on or before of due date. (in case Surveillance audit is not allowed to be conducted, this certificate shall be suspended/cancelled)

* Certificate is the Property of VATSIN CERTIFICATION and shall be returned immediately when demanded.

* E-mail : info@vatsincertification.com Website : www.vatsincertification.com

ISO Certifications 45001:2018



Certificate of Registration

This is to certify that

SKY SPECIALIZED CO. LTD.

AT

AL JUHD AL MUKHLIS STREET, AL ANDALUS DISTRICT,
P.O.BOX 10214 JEDDAH 21433, KINGDOM OF SAUDI ARABIA

has been assessed and certified by Vatsin Certification as meeting the requirements of

ISO 45001 : 2018

(Occupational Health & Safety Management System)

For the following activities

CONCRETE REPAIR & STRUCTURAL STRENGTHENING: REPAIR OF DETERIORATED
CONCRETE, CRACKS, JOINTS SEALING, REPAIR OF LEAKAGE, CATHODIC PROTECTION,
OLD BUILDING RESTORATION, STRENGTHENING BY SECTION ENLARGEMENT, CFRP/GFRP
WRAPS AND LAMINATES, CONDITION ASSESSMENT: STRUCTURES & ME FACILITIES,
HISTORICAL BUILDINGS, SOIL CONDITION ASSESSMENT, STRUCTURAL HEALTH MONITORING,
STRENGTHENING BY POST TENSIONING (PTI), SOIL MITIGATION: PERMEATION GROUTING,
COMPACTING GROUTING, UNDERPINNING, OTHER SPECIALTIES: FIRE-STOPPING &
FIREPROOFING, POLYUREA LINING, STONE FACADE MAINTENANCE AND RENOVATION,
CORING AND CUTTING

IAF CODE - 28, 34 & 35

Certificate No : VC23037008

To verify this certificate please visit at www.vatsincertification.com

Date of Initial Registration : 26-11-2025

Re-Certification Due : 25-11-2028

2nd Surveillance : 25-11-2027

Revision No. : 00

1st Surveillance : 25-11-2026

Certificate Expiry : 25-11-2028



MSCB-291




Authorized
Signatory

VATSIN CERTIFICATION PRIVATE LIMITED

Accredited by IAS (International Accreditation Services, Inc.)
(3060 Saturn Street, Suite 100, Brea, California 92821 United States of America)

* Validity of the Certificate is subject to successful completion of surveillance audit on or before of due date. (in case Surveillance audit is not allowed to be conducted, this certificate shall be suspended/cancelled)

* Certificate is the Property of VATSIN CERTIFICATION and shall be returned immediately when demanded

* E-mail : info@vatsincertification.com Website : www.vatsincertification.com

5. SERVICES:

5.1 Industrial & Public Construction

This involves the construction of all types of concrete structures residential, industrial, governmental, galleries, market centers and composite structures such as hangers, warehouses ...etc including the exterior and interior finishing works. Sky Specialized Co. Ltd. experienced teams of engineers and skilled workers know exactly the way to execute quality construction and finishing works, integrate finishing works with the existing structures and combine structural works with decorative elements.

Sky Specialized Co. Ltd. works closely with clients to make sure every meticulous detail meets the standards laid out in the design specifications.

5.2 Concrete Repairs

This includes:

- ◇ Structural & Cosmetic Repair
- ◇ Concrete Replacement & Reconstruction
- ◇ Overlays & Resurfacing
- ◇ Joint Sealing
- ◇ Cathodic Protection

5.3 Structural Strengthening

This includes:

- ◇ Section Enlargement
- ◇ Composite System Design & Application
- ◇ Fiber Reinforced Polymer (FRP) Fabrics
- ◇ Carbon Fiber Reinforced Polymer (CFRP) Plates
- ◇ Glass Reinforced Polymer (GFRP) Wraps & Laminates

5.4 Testing & Evaluation

This includes:

- ◇ Geophysical testing
- ◇ Structural Monitoring, Testing and Evaluation
- ◇ Old Building/Historical Buildings Restoration

5.5 Injection & Grouting

This includes:

- ◇ Structural Injection
- ◇ Non-structural (foaming) Injection
- ◇ Soil Injection and Grouting
- ◇ Soil Controlled Injection

5.6 Protective Coating

This includes:

- ◇ Protective Coatings for Concrete Surfaces
- ◇ Protective Coatings for Metal Surfaces
- ◇ Industrial Floors
- ◇ Polyurea Lining

5.7 Specialty Services

This includes:

- ◇ MEP Services.
- ◇ Corrosion Control.
- ◇ Concrete Cutting and Coring
- ◇ Fireproofing
- ◇ Stone Façade Maintenance

INDUSTRIAL & PUBLIC CONSTRUCTION PROJECTS CASE STUDIES & APPLICATION PICTURES

MODIFICATION AND CONSTRUCTION WORKS IN GLOBAL GYPSUM FACTORY Yanbu (Member of Lafarge international group) | 2014 / 2017

The scope of work was to construct a new calcining unit in the production area during the operation time of the adjacent production lines .The said unit was constructed in five levels from level 0.0 up to level 18.0 m. HE 600 and HE 400 supporting beams, five- levels steel platforms supported by IPE 180 beams to access the equipments was supplied , fabricated , erected and painted under the project scope of work . The erection of the main equipments - 35 MT kettle, 15 MT Feed bin, and the other equipments such as grinders, Filters, aging screw, Six screw conveyors, Kettle, pocket elevator, blower and compressor was part of the project scope of work. Also blower and compressor rooms were constructed as part of work. The project was completed in accordance to Lafarge Safety, quality and time requirements.



DEVELOPMENT OF LOAD CENTRE 1 King Abdulaziz International Airport in Jeddah | 2010

This project involved the construction and finishing of an industrial building, the Load Center 1, to replace the old existing station and accommodate the heavy equipments and chillers which supply chilled air to the south and north terminal buildings of King Abdulaziz International Airport (KAIA)

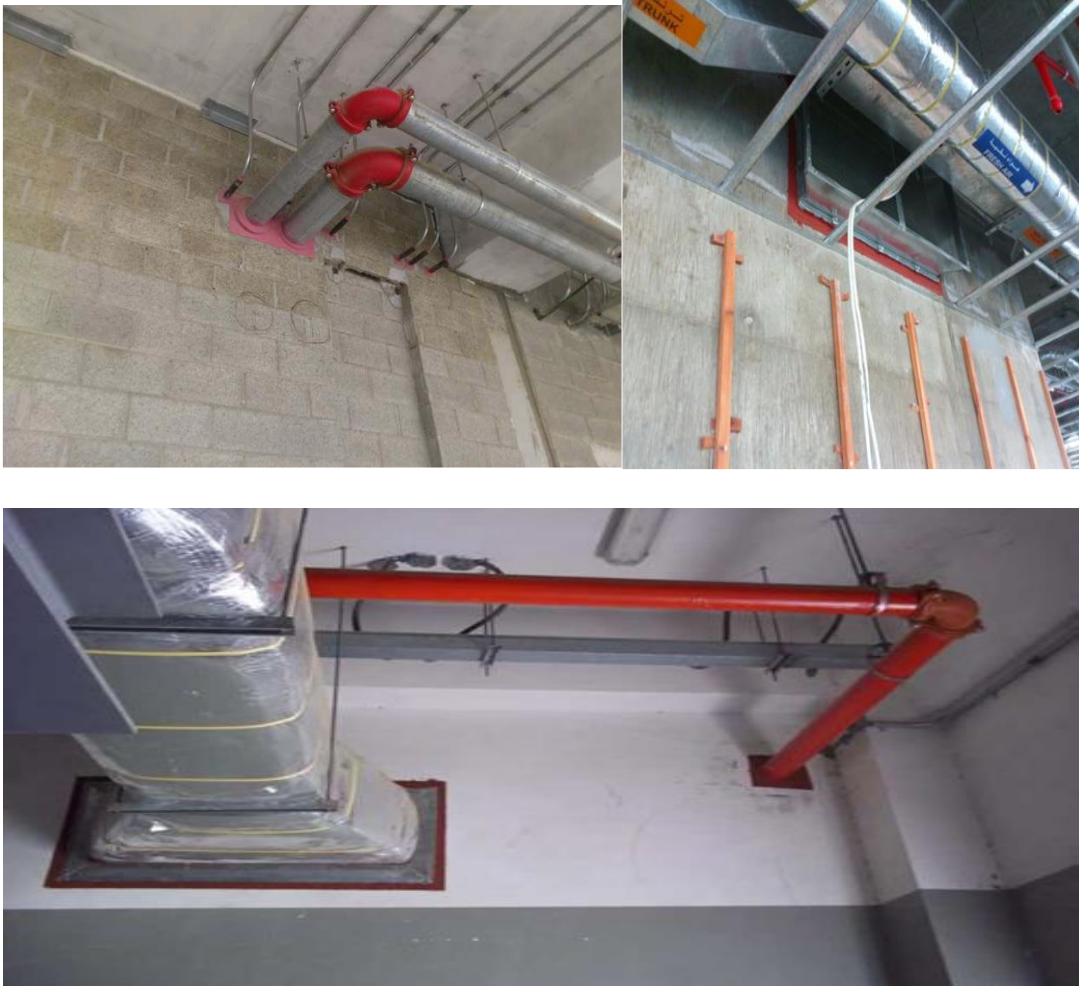
The giant structure which formed the shell for the mechanical items consisted of frames composed of tall columns and beams. Precast panels were assembled to form the exterior walls of the structure. The main structure was connected to water channels which in their turn were connected to large water basins on which the new FRP cooling tower systems were mounted.



The site surrounding the Load Center 1 was developed to include car parking and green area

APPLICATION OF FIRESTOP SYSTEM (PFP – CANADA)

Passive Fire Protection Partners was created to develop and manufacture firestop compounds using "state of the art" technology to overcome deficiencies found in other products in today's market. Passive Fire Protection Partners develops and manufactures firestop compounds that help protect life and property. Passive Fire Protection Partners has been making firestop materials since the industry's inception. For over 25 years we have been designing and improving our products while keeping in mind "Safety" and the "End User".



Key Application References

New King Abdulaziz Airport International Airport (KAIA)

Holy Haram (Makkah)

HGH Speed Railway Station (Makkah)

EXTENSION OF LOAD CENTRE 2 & 3 King Abdulaziz International Airport in Jeddah | 2009

In this project the two load centres, Load Center 2 and Load Center 3 of King Abdulaziz International Airport were developed by introducing new FRP cooling tower systems. The project works included construction of water channels, basins and barrier walls to divert water from old channels to the new ones.

These structures were constructed in a relatively short period of time due to the operation requirements set by the client.

Flexible forms were used to pour concrete of the columns supporting the water supply pipes. Pre-cast slabs were used as part of the construction to reduce the time required for the completion of the works.

Concrete surfaces were protected using water proofing protective coating systems. Joints between the existing structures and the new channels were secured using high quality, water-tight joint systems.



NEW CABLE ROUTING FOR THE 400 HERTZ PROJECT King Abdulaziz International Airport in Jeddah | 2011

This challenging project was about replacing existing deteriorated 400 Hertz cables running under 400 mm-thick concrete slabs of Apron 1 with new cables along with their new concrete ducts.

The duration of the works was limited to 58 working days and involved different works with maximum precautions for safety and minimization of disturbance to air traffic in adjacent aprons.

The works involved cutting of concrete, demolishing and removal of concrete slabs, excavation of soil below the concrete slabs, placement of vapour barriers, placement of PVC conduits, fixing steel dowels along the sides of exposed cut surface of concrete slabs, construction of concrete ducts, applying bonding agent to the surfaces of the cut concrete slabs, reconstruction of concrete slab and finishing the surface to match existing old slabs, pulling new cables into the PVC pipes and finally testing and commissioning the new cables.



DEVELOPMENT OF SITTING AREAS AND TOILET UNITS. Hajj Terminal-King Abdulaziz International Airport Jeddah | 2008

The objective of this project was to upgrade existing toilet units and sitting areas in the zones forming the Hajj Terminal.

Twelve toilet units (each containing 33 cubical) were completely renovated and upgraded following the design and standards set by the client's designers and consultants.

Sitting areas were developed to accommodate pilgrims and provide them with a spacious area where they can sit and take rest before proceeding to the next activity of their journey. These finishing works involved installation of high quality items intended for public areas.

From toilet seats to ablution faucets, all were supplied by world class suppliers in order to meet the strict requirements of this important facilities.

High quality epoxy flooring systems and UV resistant sealers were used to give the sitting areas their final decorative appearance.



RENOVATION AND DEVELOPMENT OF TOILET UNITS AT THE DOMESTIC ARRIVAL AREA

The project involved renovation and development works of two main toilet units: Ladies unit consisted of 8 cubicals, washing area and kids toilets. Men unit consisted of 6 cubicals, washing /ablution area and a store.

The project scope included the preparation of architectural and MEP designs for modification and finishing of the units. The previous toilets were removed; new ones were constructed in the same space with new layout and finishing items.

New lift station was constructed and connected to the new toilet units due to the shortage of the capacity of the existing one.



CONCRETE REPAIRS

PROJECTS CASE STUDIES & APPLICATION PICTURES

CONCRETE REPAIR OF SEVEN CELLS AT LOAD CENTRE #4 King Abdullah Air Base in Jeddah | 2009

This project involved different types of challenging remedial works at this important industrial facility in King Abdullah Air Base. Prior to any repair works, existing hazardous asbestos sheets were to be removed in a very professional way to guarantee that this material should not cause any problems to personnel working in neighboring buildings.

All concrete members forming the structure of the Load Centre 4 were structurally respired. Main structural members such as the central columns and the main and secondary beams supporting the gear box of the cooling tower propeller underwent repair and strengthening works. The CFRP sheets were used in these works.

Upon completion of all repair works, different types of protective coating systems were used to provide extra protection to the concrete surfaces on which they were applied. Epoxy flooring systems, epoxy polyurethane coating systems, anti-carbonation coatings and cementitious waterproofing coatings are examples of the protective systems applied.



RENOVATE AND REPLACE AS REQUIRED CIVIL & MECHANICAL WORKS IN THE MAIN RESERVOIR TANKS King Abdulaziz International Airport in Jeddah | 2012

The six reservoir tanks along with the header lines required urgent repair and upgrading. As these tanks supply potable water to the terminal buildings, airport management buildings, airport accommodation compound and the airport fire station, the importance of conducting the remedial and upgrading works in the shortest time possible could not be over emphasized.

Civil rehabilitation works and mechanical works including under-water installation of blind flanges, replacement of: valves, header pipes, overflow pipes ... etc. were carried out in parallel. High quality protective coating system was applied to the internal surfaces of the tanks with joint membrane system.

New valve rooms, were constructed to accommodate the tanks' new automated operation system which consists of the new valves of the supply and suction pipes with their actuators, control panels etc.



REPAIR OF DAMAGED CONCRETE COLUMNS OF NORTH TAXI TAXIWAY BRIDGES OF JAK 01, 02, 03, 04 AND MAINTENANCE OF WATER DRAINING SYSTEM King Fahd International Airport in Dammam | 2012

The project involved repair of bridge abutment chest walls, repair and strengthening of columns, repair of deck soffit and repair of certain portions of deck approach slabs. Drainage system of the same bridges required cleaning and maintenance as well.

Necessary supports were used to unload columns prior to chipping damaged concrete, application of the repair systems and the carbon fibre sheets as the structural strengthening system.

Early strength special concrete mix was used to repair damages portions of the deck slab and shorten the time of re-opening the bridge for traffic. Chemical compounds were applied for the curing of the poured concrete instead of the conventionally used wet burlap.

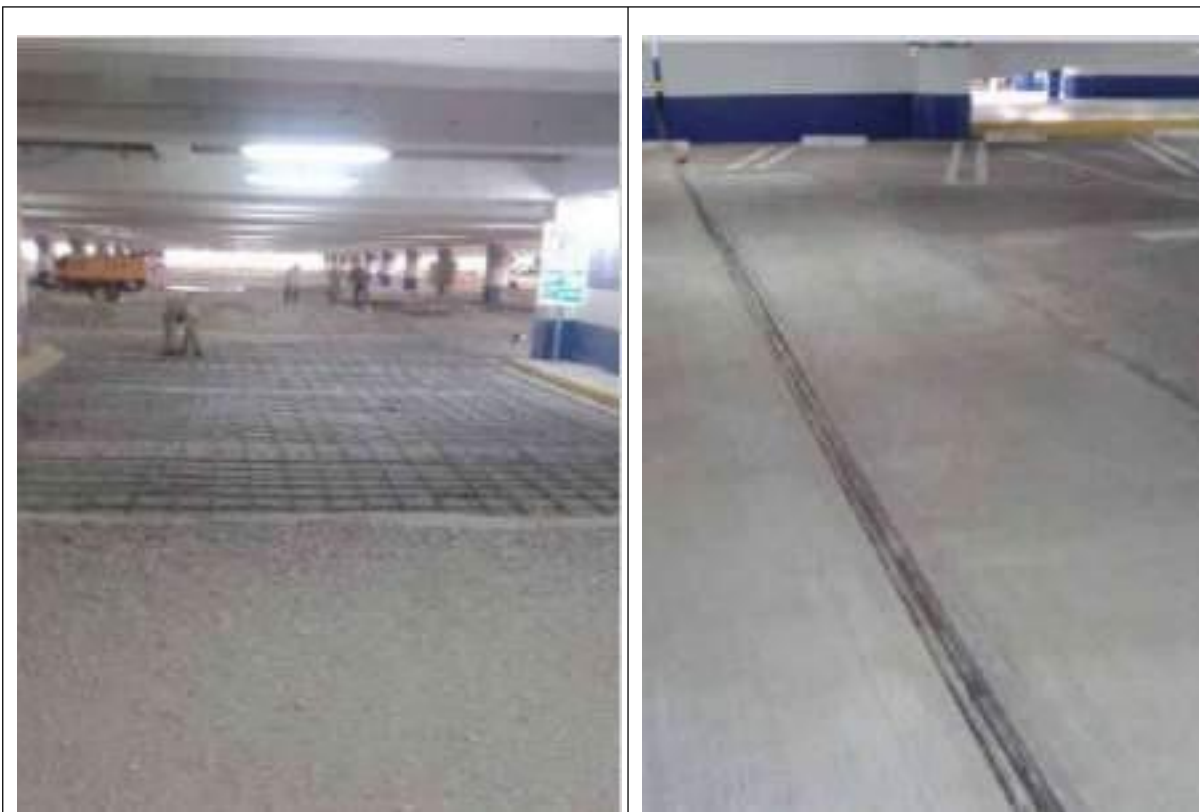


REPAIR OF FLOOR SLABS, BEAMS AND CEILING OF TERMINAL PARKING GARAGE

King Fahd International Airport in Dammam | 2014

Deteriorated floor slabs of KFIA terminal parking garage were repaired. Operation disturbance of the parking garage was avoided by close coordination with the KFIA authorities and the contractor operating the facility.

Deteriorated beams were repaired as well. Through repairs of considerable portions of the ceiling were carried out.



REPAIR OF DETERIORATED CEILING OF A TUNNEL King Fahad International Airport in Dammam | 2014

Portions of the ceiling in the underground-electrical rooms detached due to deterioration and fell on the floors raising red flags on the possible damage that could happen if the such portions hit the transformers. Necessary scaffolds were erected and the ceiling was repaired using the form and pump technique.

The water leaking from the walls into the below grade electrical rooms was treated by injection of basement walls. Further, sumpit was constructed in the floor of the room to collect rising underground water and pump into the drainage pipes.



REHABILITATION OF KFIA CENTRAL PLANT (COOLING TOWERS)

King Fahad International Airport in Dammam | 2014

The project involved the dismantling, removal of electromechanical equipments in two of the four cooling towers at KFIA central plant, repair of damaged concrete structures at the same towers including the repair of the main cross beams which were supporting the fans. The work also involved the repair of the damaged shaft and cells walls, ceilings, columns, floors and roof slabs. The repair of vertical and overhead surfaces was done using the form and pump repair method with special grout pumping machine.

The beams were strengthened for the flexural loads by means of CFRP strips. The structure was re-painted by a cementitious based waterproofing coating system. The towers were repaired without interrupting the operation of supply the cooling water to the Air conditioning chillers of KFIA in accordance to KFIA operational, quality and time requirements.



REPAIR OF ELECTRICAL ROOM CEILING AND PROVISION OF WATER DRAINAGE SYSTEM King Fahad International Airport in Dammam | 2014

Portions of the ceiling in the underground-electrical rooms detached due to deterioration and fell on the floors raising red flags on the possible damage that could happen if the such portions hit the transformers. Necessary scaffolds were erected and the ceiling was repaired using the form and pump technique.

The water leaking from the walls into the below grade electrical rooms was treated by injection of basement walls. Further, sump pit was constructed in the floor of the room to collect rising underground water and pump into the drainage pipes.



SLOPE STABILIZATION USING THE SHOTCRETE Mena (Makkah) | 2008

Falling rocks from slopes imposed grave danger on the tents accommodating pilgrims. Lives were threatened by the falling rocks. This required immediate action.

Recommended works involved stabilization of slopes using sprayed concrete mix (shotcrete).

Large areas were sprayed to prevent future fall of rocks.



CONCRETE REPAIR OF HARAM EXPANSION BUILDINGS

Haram Expansion Buildings in Makkah | 2014

The project involved the repair of honeycombed concrete ceiling, beams and columns in different structures of Haram Expansion projects such as Service buildings, Security buildings, Expansion of Al Matarf .etc. Dar Al Handasah – the project Consultant – requirement is to repair the deep honeycombings using Form & Pump repair technique to avoid any gaps in the repaired sections. Special grouting pump was used to fill the prepared cavities with a non- shrink flowable micro-concrete materials of 80 Mpa compressive strength.



CONCRETE REPAIR OF SAFARI HOTEL BASEMENT GARAGE Jeddah | 2009

The basement garage of Safari Hotel – Jeddah, showed signs of sever deterioration in the ceiling, walls and columns.

The client required urgent repair of the same concrete members in order to avoid closure of the parking garage. The repair works were carried out using pre-bagged special construction materials with all ancillary products such as bonding agent and curing compounds.



REPAIR OF JOINT SEALANT AT 5 APRONS IN KAIA King Abdulaziz International Airport | 2022

Client: Jeddah Airports Company (JAC)

Overview: The project scope involves the removal of the deteriorated mastic sealant in the expansion joints & applying hot-applied sealant using sealant melter. Cracks are also routed by crack routers & filled with hot-applied sealant.







REPAIR OF FGD & MSF STRUCTURES AT SWEC POWER PLANT IN SHUAIBAH | 2020

The Client: Shuaibah Water & Electricity Co. / SWEC- a member of Acwapower Group. Repair of Deteriorated concrete surfaces of Foundations, walls & floors at FGD Reservoirs & Seawater Channels. The scope involved the repair by Form & Pump methodology, installation of sacrificial anodes & application of Protective Coatings @ splash zones of submerged walls & foundations.





REINSTATEMENT OF BRIDGE UPPER RISER OF POT BEARING Royal Commission in Yanbu | 2013

The upper risers of bridge pot bearings were honeycombed and required urgent remedial works.

Due to the significance of this element to the whole bridge structure, non-conventional repair techniques were to be employed. Namely, the form & pump method was employed to reinstate the upper risers. The form and pump repair method is about construction of formworks and pumping repair material into the cavity between the form and the existing concrete. This method has many advantages such as: (a) the use of any type of repair material, (b) applying repair material under pressure thus ensuring good compaction of the material and good bonding to the existing concrete, (c) application of repair material is not restricted by the thickness of the section, density of reinforcement etc.

The output of the remedial works using the form and pump for the pot bearing upper risers was very satisfactory.



REPAIR OF SIDE WALLS Al-Salam underpass, Jeddah | 2015

The side walls of Al-Salam underpass required repair and protection. Traffic detours were established to create safe work conditions on the busy road of Al Andalus street where the underpass is located.

Existing GRC claddings were removed to expose the concrete walls. Deteriorated concrete of walls was chipped and removed to uncover corroded reinforcing steel bars. Cathodic Protection elements were attached to the re-bars after the surface preparation works were completed.

Form and Pump procedure was employed to reinstate the concrete walls.



REPAIR OF R.C. IN ELEVATOR SHAFTS OF HIGH-RISE BUILDING

High-rise residential building, Jeddah | 2013

Some concrete members (columns & beams) of the elevator shaft in a residential building were severely damaged by the poor workmanship of the elevator supplier.

Standard concrete repair works were carried out to these members.



CONCRETE REPAIR OF STRUCTURAL MEMBERS AT AL KAAKI COMMERCIAL BLD. Jeddah | 2016

Al Kaaki Building consists of a basement, ground floor and 13 typical floors located in the Madina road - Jeddah and constructed 27 years ago. The structural components of the building are raft foundation, columns, beams & ribbed structural slabs.

Due to seepage of sewage water from the suspending plumbing network in ground & 4th floors, major part of the ceilings and beams were deteriorated and steel rebars were corroded.

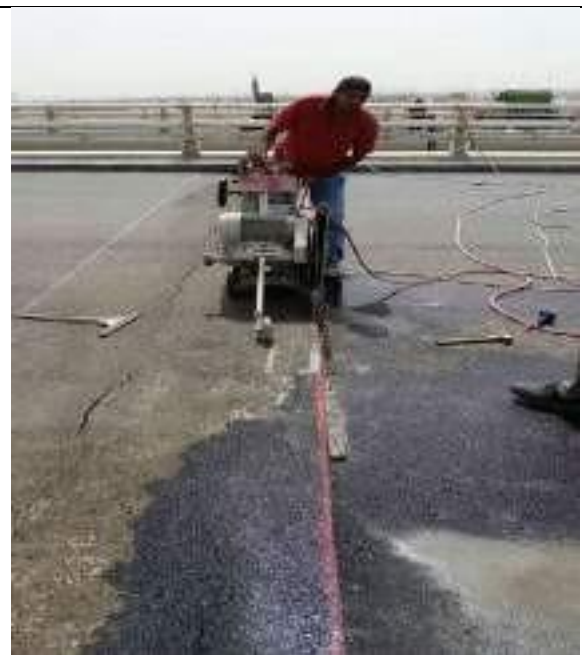
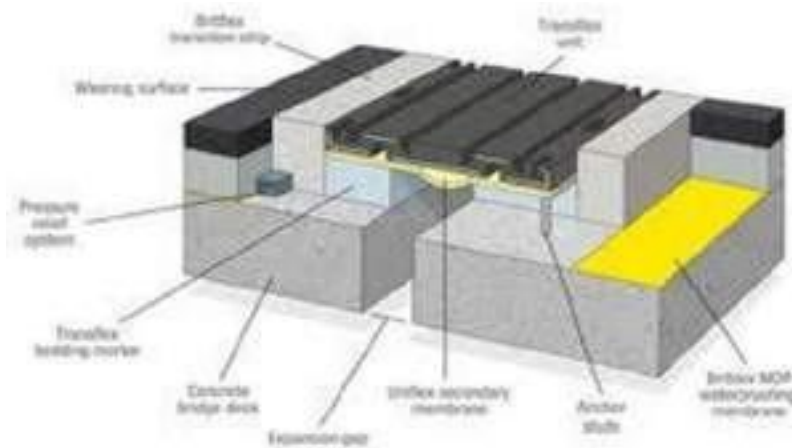
The scope of work was to remove the damaged portion of concrete ribs and beams, clean the steel rebars and compensate the lost ones by new, preparation of formworks and pump the micro-concrete materials into formworks. Concrete repair by Form & Pump procedure were carried out in upper vacant and fully furnished floors.



**STRUCTURAL STRENGTHING & UPGRADING
BRIDGE EXPANSION JOINTS & LIFTING OF BRIDGE
FOR REPAIRS.
PROJECTS CASE STUDIES & APPLICATION
PICTURES**

Installation of 2000 Linear Meters Of Expansion Joints for Bridges KAIA Development Project Phase-1 J-10-422-PF-0 Jeddah 2013

The scope of work involves Installation of 2581 Linear Meters of Expansion Joints for Bridges KAIA Development Project Phase-1 J-10-422-PF-0 in Jeddah.









Hamdania Bridge - Lifting Of Bridge to Repair the Plinths

Hamdania Bridge – Lifting of bridge to repair the plinths.





Internal Post Tension & Post Tension for Bridge Girders

Internal Post Tension to reconnect the bridge after accident. Concrete Repairs done by IKK.





Abha Bridge – Post Tensioning Bridge Girder



Abha Bridge – Post Tensioning Bridge Girder

Al Ma'arid, Abha Underpass – Post Tensioning Bridge Girder



Al Ma'arid, Abha Underpass – Post Tensioning Bridge Girder



Fishing Bridge, Harida Aseer Province – Post Tensioning of Bridge



Fishing Bridge, Harida Aseer Province – Post Tensioning of Bridge



Fakeeh Theater Roof, Makkah – Post Tensioning of Slab



Fakeeh Theater Roof, Makkah – Post Tensioning of Slab



Fakeeh Theater Roof, Makkah – Post Tensioning of Slab



Fakeeh Theater Roof, Makkah – Post Tensioning of Slab





Grouting Work



Grouting Work

STRENGTHENING OF STRUCTURAL MEMBERS USING CFRP WRAPS AT DESALINATION PLANT SWCC, Yanbu | 2016

Sky Specialized Co. Ltd. conducted structural strengthening of structural members in the Yanbu 3 SWCC plant.

CFRP wraps were installed for beams - columns joints for enhancement against extra shear force due to extra lateral loads.



STRENGTHENING OF CONCRETE BEAMS BY INSTALLATION OF CFRP LAMINATES

Mahmood Saeed Mall, Jeddah | 2014

The scope of work was to install CFRP laminates from Fyfe Co. For beams at several levels of Mahmood Saeed Mall. The system was designed and supervised by an international consulting firm (Buro Hapold). the beams were prepared by mechanical grinders and pinhole as were filled with Epoxy Putty and two layers of CFRP laminates were installed by our technicians.



REHABILITATION & RENOVATION Private villa, Jeddah | 2009

Concrete beams and columns in a private villa showed signs of deterioration.

Repair works were carried out to damaged members.



REHABILITATION OF LOAD CENTER NO.4 King Abdul Aziz international airport, Jeddah | 2008

Client: General Authority of Civil Aviation - GACA

Consultant: SOCOTEC

Contractor: Safari Co. Ltd

Applicator: Sky Specialized Co. Ltd. for Constructions

Products: Nitoplate CP Strips, Nitowrap FRC, Nitomortar TC2000, Renderoc TG Xtra, Renderoc LA, Nitocote EPU, Dekguar E2000, Thioflex 600.

Background

King Abdul Aziz International Airport in Saudi Arabia's busiest and the 2nd busiest in Persian gulf after Dubai international airport. KAIA is the third largest airport facility in Saudi Arabia. The airport occupies an area of 15 square kilometers. Beside the airport proper, this includes a royal terminal, facilities of the Royal Saudi Air Force, and housing facilities for the airport staff.

Construction work on KAIA airport began in 1974, and was finalized in 1980. Finally, on May 1981 ,31, the airport opened for service after being officially inaugurated in April 1981.

Rehabilitation of loading centers of KAIA involved repair and strengthening of central columns of 7 cells. The central columns were repaired following the standard procedures of concrete repair. Strengthening was carried out using CFRP systems supplied by Forsoc.

Constructive Solution:

FORSOC Constructions Solution was endorsed by introducing CFRP as high performance repair technology. The concrete repair includes grouts, primers, bonding agents, protective coating and sealants were adopted to commission the rehabilitation works for the seven cells. Standard concrete repair works were carried out to these members.



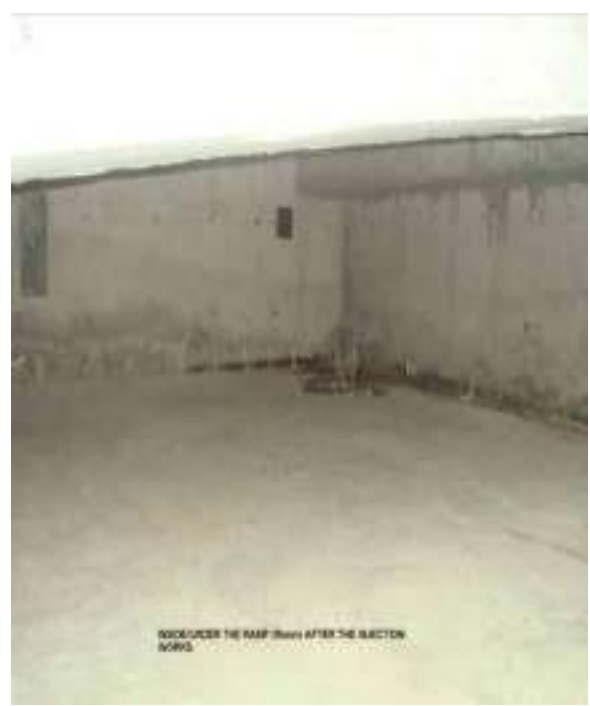
INJECTION & GROUTING PROJECTS CASE STUDIES & APPLICATION PICTURES

INJECTION OF FOAMING MATERIAL TO STOP LEAKING WATER

Mall basement, Jeddah | 2013

The basement of a mall in Tahliyah street (Jeddah) was flooded with water leaking from walls and slab floors.

Injection of foaming material was carried out to stop the water leakage. The results were excellent, and the basement was as dry as it should be.

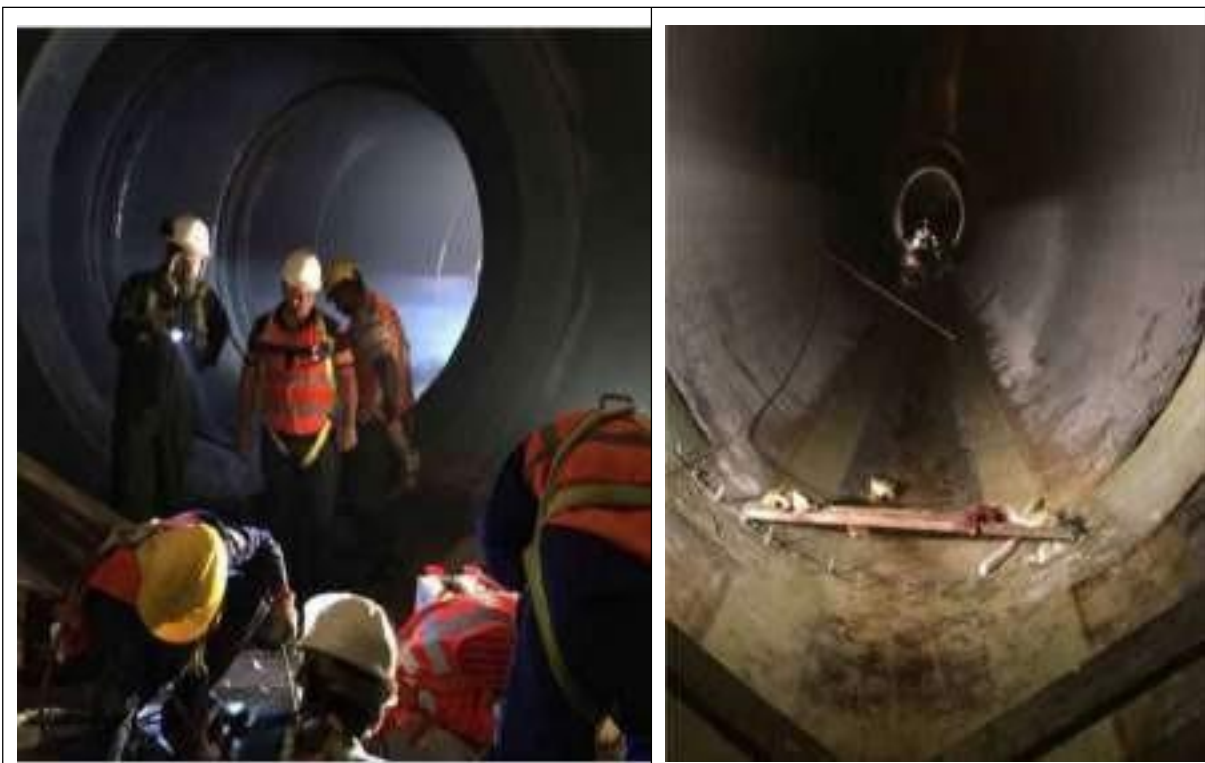


REPAIR OF GRP PIPES' LEAKING JOINTS Rabigh Power Plant, Rabigh | 2016

Strong leaks from joints of cooling water return GRP lines in RABEC plant were noticed during a shutdown in Jan. 2016. The leakage was caused by the movement of joints and differential settlements of the pipe segments. The pipe diameter is 3.8 meters, located 2 meters below ground level while water table was 4 meters from Ground level.

The water was gushing from ground side into the pipe line.

Multi component water reactive resin and acrylic gel were used to stop the leakage and dry the joints before installation of FG bandages by the manufacturer of the pipe. The job was critical due to limited shutdown and strong water leakage.



SOIL MITIGATION MEASURES IN SELECTED FACILITIES @Acwapower RABEC | 2022

The scope involved the repair of soil settlement beneath Generator building by Resin permeation grouting, soil improvement of Dyke pond walls by cement grouting, Stabilization of GRP concrete pipe encasement & soil mitigation measures beneath Two live HV transformers by performing horizontal permeation grouting & inclined compaction grouting works beneath the foundation of the transformers.





SOIL MITIGATION MEASURES AT RABEC FACILITIES RABEC| 2019

The Client: Rabigh Electricity Co. / Acwapower Group

Overview: Soil mitigation measures beneath selected structures to control the soil settlement.

(1) The project scope involved Soil permeation grouting using resin injection (2) Perform Controlled Compaction Grouting using a European patent compaction grouting methodology. Design & installation of long-term real-time settlement monitoring system @ selected facilities across the plant to verify the effectiveness of the mitigation measures in the long term. Validation of mitigation measures was conducted by Geophysical scanning & Geotech. tests.







SOIL MITIGATION MEASURES IN SELECTED FACILITIES @ RABEC PLANT – PHASE 2 | ACWAPOWER RABEC 2022

Client: ACWAPOWER RABEC

The scope involved the repair of soil settlement beneath Generator building by Resin permeation grouting , soil improvement of Dyke pond walls by cement grouting , Stabilization of GRP concrete pipe encasement & soil mitigation measures beneath Two live HV transformers by performing horizontal permeation grouting & inclined compaction grouting works beneath the foundation of the transformers.







PROTECTIVE COATING & WATERPROOFING PROJECTS CASE STUDIES & APPLICATION PICTURES

WATERPROOFING OF SOJECO POTABLE WATER TANKS. Tank A @Obhur and Tank B @ South Corniche Jeddah| 2022

Client: **SAWACO Water Desalination**

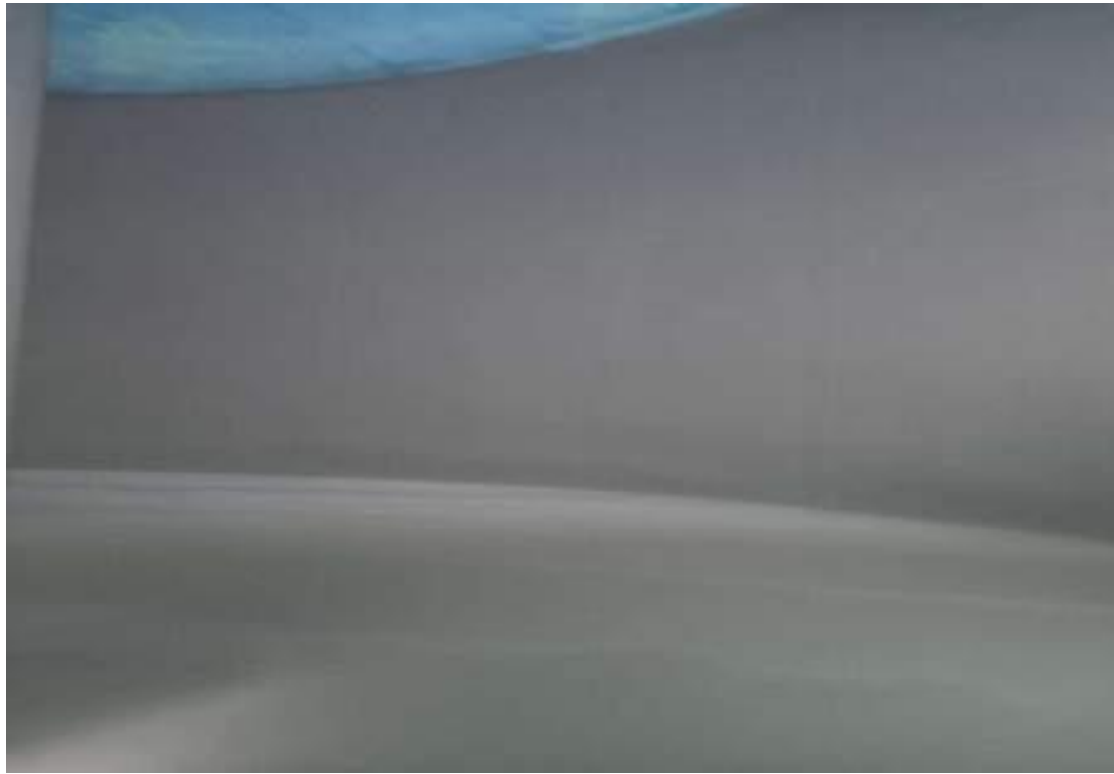
The scope of work involved : Epoxy crack injection works, Internal surface preparation of the water tank and application of hot applied Polyurea Coating (Nukote Polyurea) at a thickness 2000-3000 microns using Graco HXP-2 Reactor Machine using NUKOTE POLYUREA.







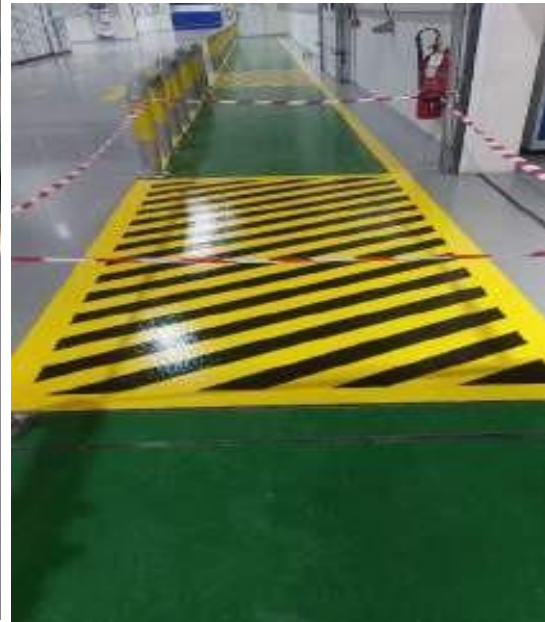




APPLICATION OF EPOXY FLOORING, SCREEDING, WATERPROOFING AND JOINT WORK @ BERAIN WATER FACTORY - Jeddah | 2023

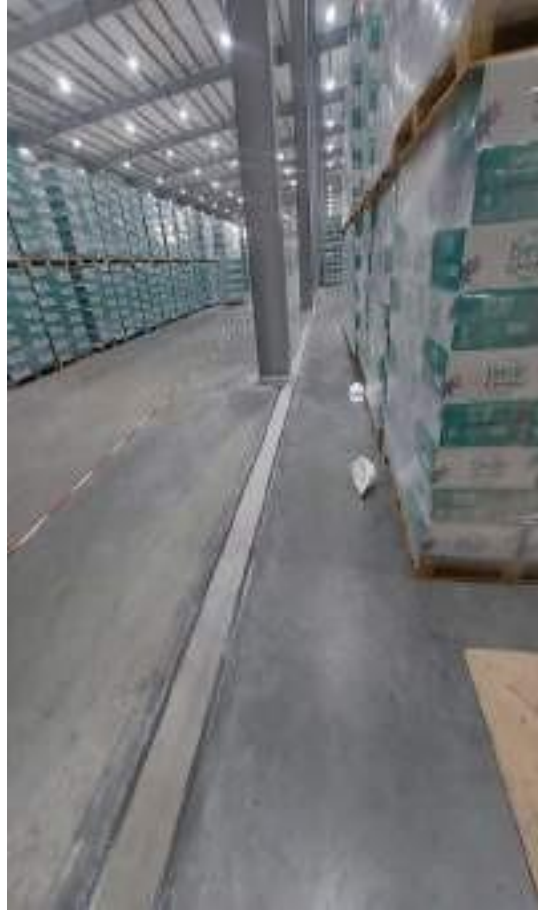
The scope of work involves supply and application of Epoxy Floor Coating, Joint repairs using epoxy screed, application of Joint sealants, Traffic marking and Epoxy Waterproofing system at Berain Water Factory in Jeddah – KSA.







Before

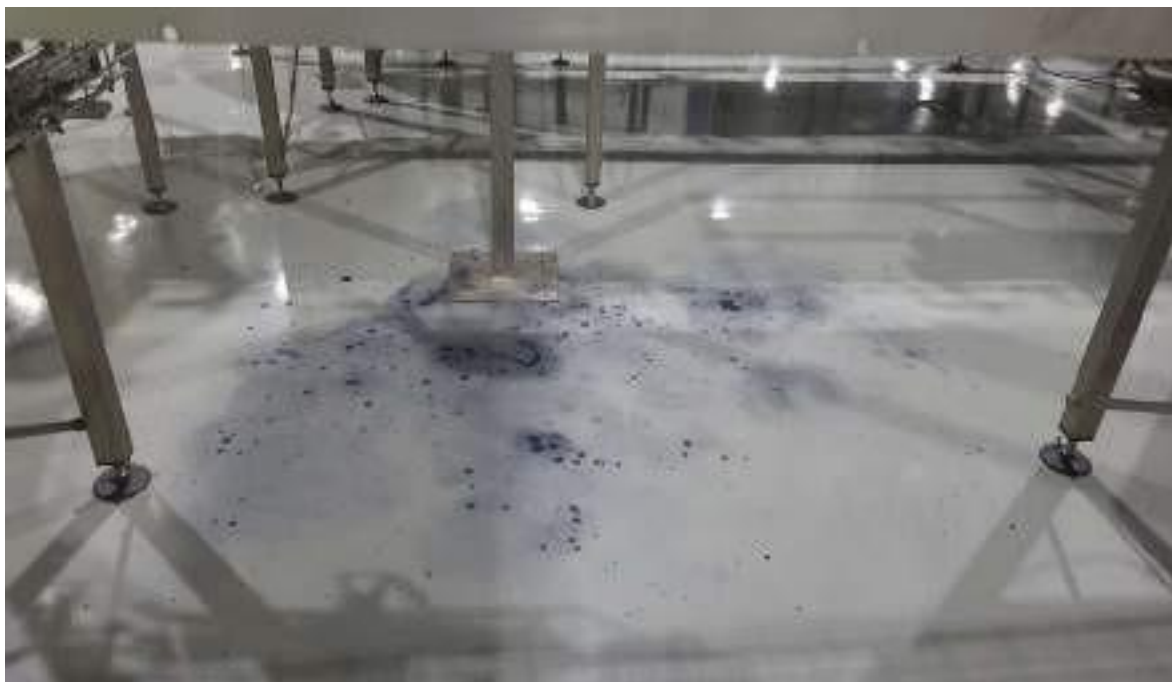


After



Before

After



Before



After





APPLICATION OF PROTECTIVE COATING SYSTEM TO DIFFERENT BRIDGES - Makkah | 2015

The municipality of Makkah intended to carry out upgrading works of many bridges in the same city. The upgrading works included the application of protective coating systems to the concrete surfaces of the bridges.

Preparation works were carried out to improve the quality of the concrete surfaces of the bridges using the sandblasting procedure. Components of anti-carbonation protective coating system were mixed and applied to the prepared concrete surfaces following the instructions of the manufacturer.



APPLICATION OF PROTECTIVE COATING SYSTEM TO SHAFTS Main Sewage Station, North Jeddah | 2012

Protective coating systems were applied to the exposed shaft walls after completion of sandblasting, retouching and injection works.

Difficult work conditions were overcome by highly trained workers equipped with full sets of safety gears.



WATERPROOFING OF THE NORTH TERMINAL ROOF King Abdulaziz International Airport, Jeddah | 2012

The roof of the North Terminal at King Abdulaziz International Airport in Jeddah required waterproofing.

Bituminous membranes were used in the works. Flood test was carried out to ensure the soundness of completed works.



WATERPROOFING & REFURBISHMENT WORKS AT THE FRENCH CONSULATE - Jeddah | 2016

Project scope included repair of leakage and waterproofing works at basement floor, roof and facades of Consular Building which is located in Jeddah. The water tank and mechanical room were repaired and insulated from inside by a waterproofing coating system.

The works also included installation of mechanical dewatering system which consisted of submersible pumps installed inside deep sum pits located around the building. The function of these sum pits is to lower the water table at basement level and stop the leakage throughout the basement floors at different locations.

Floor tiles and MEP fittings at different locations were replaced by new ones. Facades were secured against leaking joints. Roof waterproofing system was removed and replaced by new system including the heat insulation system. Gypsum board ceiling at different locations was replaced. Wet areas and damaged paint of walls were treated and painted with crystalline waterproofing system. Walls were re-painted with new decorative paint.



SPECIALTY SERVICES PROJECTS CASE STUDIES & APPLICATION PICTURES

DESALINATION PLANT PIPES NETWORK EXPANSION Yanbu | 2012

HDPE and GPR pipes network laying and connecting works at Yanbu Desalination plant.

Main contractor: Marafeq.



STATION 1 - HDPE NETWORK REPLACEMENT King Abdulaziz International Airport, Jeddah | 2012

This project involved laying and connecting pipes, at King Abdul Aziz International Airport, Station 1.

The main network pipes were replaced with new HDPE network, including excavation, dewatering laying pipes and connecting to the network. New valves and flow meters were supplied and connected to a PLC control board.



UPGRADING OF AIR HANDLING PLENUMS AT THE NORTH & SOUTH TERMINALS, King Abdulaziz International Airport, Jeddah | 2014

The project involved replacement of AHP components with new ones for the North and South Terminals. New items were supplied and installed to replace the old ones such as supply fans, return fans, chilled water pumps, cooling coils ..etc.

Critical operation conditions were part of the project challenging works. The outcome of the works was very satisfactory for the client (KAIA).



INSTALLATION OF 200 MM-HDPE FIRE WATER PIPE FOR THE SOUTH TERMINAL EXTENSION BUILDING, King Abdulaziz International Airport, Jeddah | 2014

Insurance companies did not approve new contract with KAIA for the south terminal as the fire fighting system in the same location was out of order as water supply line for this system was out of order.

New HDPE line with all necessary accessories was installed to provide water for the fire fighting system.



REPLACEMENT OF SKYLIGHT GLASS AT THE NORTH TERMINAL

King Abdulaziz International Airport, Jeddah | 2014

The polycarbonate glass cover of the North Terminal was broken causing hot air and dust to blow into the terminal. Measurements of the remaining intact cover pieces were taken, new cover manufactured, placed and sealed.



REPLACEMENT OF 7 AC PACKAGES AT THE SOUTH TERMINAL King Abdulaziz International Airport, Jeddah | 2014

Seven exhausted AC packages at the KAIA south terminal required urgent replacement.

New packages were delivered to site and installed with all related accessories such as ducts, cables, electrical panels etc.



INSTALLATION OF FLOW METERS King Abdulaziz International Airport, Jeddah | 2014

The Maintenance & Utilities Department of King Abdulaziz International Airport required the installation of flow meters in certain locations to provide information on the potable water flow in the pipes network.

Excavation works were carried out to expose the pipes on which flow meters were to be mounted.

Concrete manholes were constructed at the designated locations to accommodate the flow meters.

New ultra-sonic flow meters were mounted on the pipes. Solar cells were installed on top of the concrete manholes to supply power necessary to operate the flow meters.



CUTTING AND REMOVAL OF REINFORCED CONCRETE MEMBERS OF BRIDGES

Bridge GSE 06 and Bridge GSE 07 in Dammam | 2011

As part of the renovation works of the Bridge 06 and Bridge 07, the planter boxes on both sides of the bridges were one of the items in the bridge structures to be removed.

The planter boxes were emptied of the soil that existed inside them. Cutting of the horizontal portion of the boxes were carried out on both sides of each bridge. This work was followed by vertical cutting (slicing) of the vertical portions of the boxes to completely free the cut portion before lowering it to the ground.

Upon removal of the planter boxes, concrete ribs supporting these boxes were uncovered. These ribs were removed using core machines with large-diameter core bits.

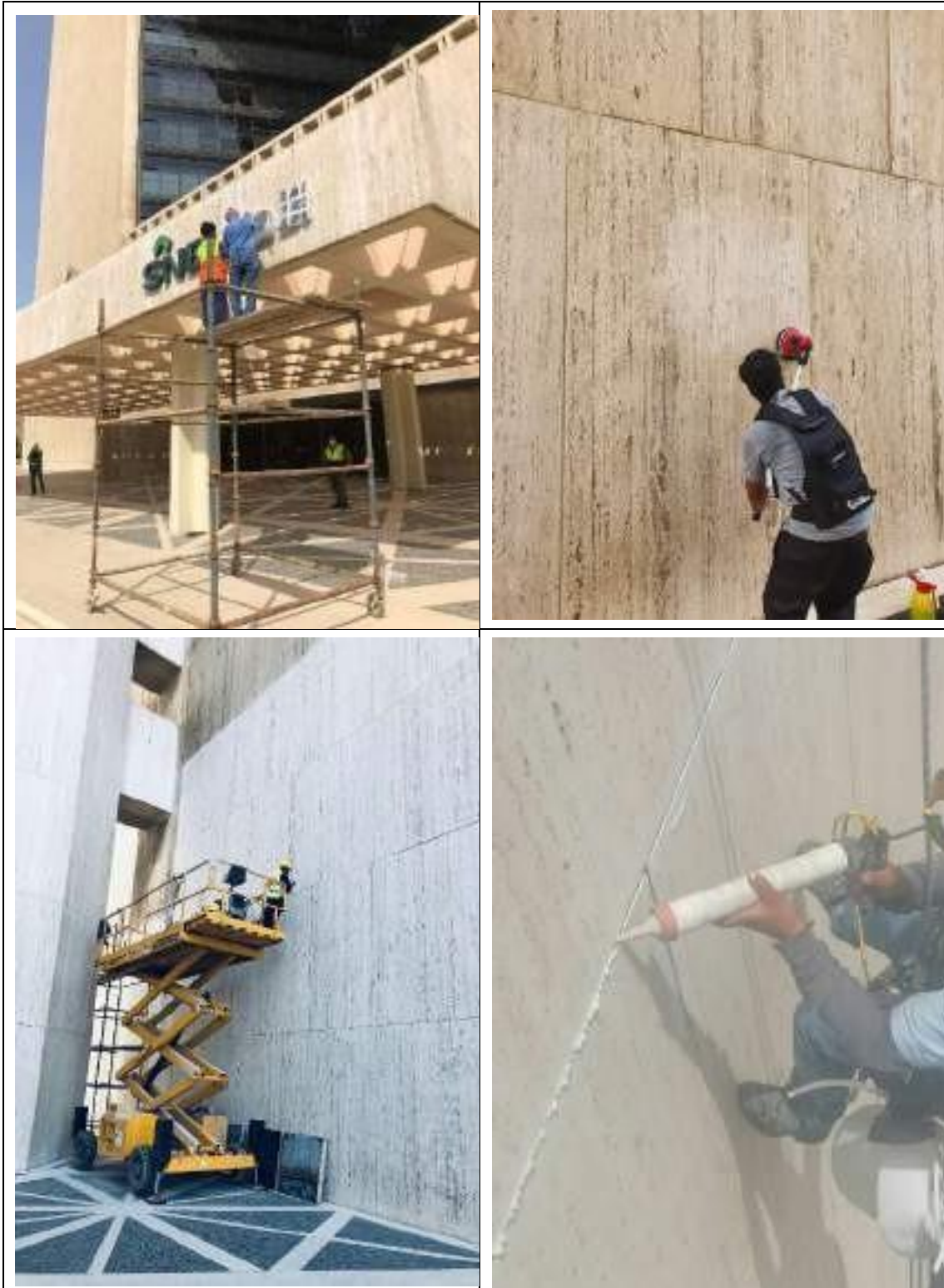


MAINTENANCE OF SNB HQ FAÇADE JEDDAH | 2022

Client: SNB / SHEC Office

Overview: Cleaning stone façade by Chemical Scrubbing, & Replacement of joint sealant mastic. The Building is considered the 3rd highest marble finished building in the world.

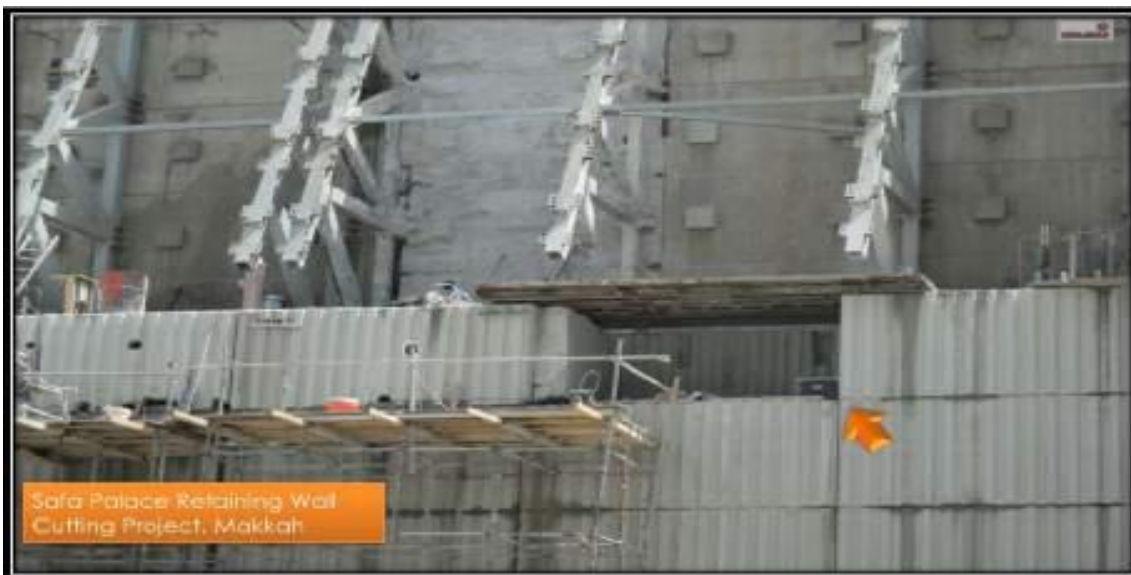






CORING & CUTTING SAFA PALACE PROJECT

Safa Palace Retaining Wall Cutting Project - Makkah









ZAMZAM AREA CONTROLLED DEMOLITION PROJECT





WALL SAW & WIRE SAW CUTTING JOB



Wall Saw Cutting





MAKKAH MINARAT - SAW CUTTING JOB











MEMBERSHIP & CERTIFICATES

FIRESTOP CONTRACTORS INTERNATIONAL ASSOCIATION

2025 MEMBERSHIP CERTIFICATE

THIS CERTIFIES THAT

**SKY SPECIALIZED CO. LTD
SAUDI ARABIA**

IS AN INTERNATIONAL CONTRACTOR MEMBER OF THE
FIRESTOP CONTRACTORS INTERNATIONAL ASSOCIATION
AND PLEDGES TO FURTHER THE MISSION OF FCIA

FCIA Member Since: 2025, 05



Gus Mancini, *President 2025*

Mark Dietz, *Director*
Jerry Dugan, Jr., *Director*
Jay McGuire, *Director*
Darren Pollock, *Director*
Joe Wilkinson, *Director*

Ben Urcavich, *Director*
Alan McDurmon, *Past President*
Tyler Ferguson, *Past Past President*
Lindsey Dutkiewicz,
Executive Director

MEMBERSHIP & CERTIFICATES



MEMBERSHIP & CERTIFICATES



APPROVED APPLICATOR CERTIFICATE

SKY SPECIALIZED CO LTD (Formerly Noor Trading Co)

This is to acknowledge that, M/s Sky Specialized Co Ltd, has been registered as an approved applicator and the company demonstrated competence in applying the following Master Builders Solutions Saudi Arabia products.

- » Protective Coatings & Flooring Systems
- » Waterproofing Systems & Sealants

This certificate has been issued upon the request of Sky Specialized Co Ltd without having any liability on Master Builders Solutions Saudi Arabia for Manufacturing LLC. It is the sole responsibility of Sky Specialized Co Ltd to strictly follow the written Method Statement, use proper tools/equipment and maintain good workmanship while applying the products.

This certificate is valid till June 2024 and Master Builders Solutions Saudi Arabia reserve the right to cancel / withdraw the certificate any time if the application of the products is not in line with our written Method Statement. In the occurrence of the above, this certificate become void and null.

Date : 29th June, 2023
Ref. No. : AA/PW/148/2825

For and on behalf of
Master Builders Solutions Saudi Arabia for Manufacturing LLC



Prasad Anandu Wankar
Quality Manager

MEMBERSHIP & CERTIFICATES



الموضوع: طلب تأهيل

المحترمين

السادة شركة سما التخصصية المحدودة
(ص.ب ١٠٢٤ - جدة ٢١٤٣٣)

السلام عليكم ورحمة الله وبركاته

إشارة لخطابكم المقيد لدينا برقم ٧٧٨٨٣ وتاريخ ١٤٤٤/٩/١٥ هـ بخصوص طلبكم اعتماد وتأهيل شركتكم (شركة سما التخصصية للمقاولات المحدودة) كمقاول باطن بمشاريع صيانة أداء طرق المملكة بوزارة النقل والخدمات اللوجستية، وعليه نفيديكم بأنه لا مانع لدينا اعتمادكم كمقاول باطن معتمد لدى وزارة النقل والخدمات اللوجستية لتنفيذ الأعمال الآتية:

1. تنفيذ وتركيب فواصل التمدد للجسور بأنواعها
2. أعمال إصلاح وحماية الخرسانة وحقن ومعالجة الشروخ الانشائية وغير الانشائية.
3. تنفيذ أعمال العزل المائي والدهانات المضادة للكرينة (Anti-carbonation).
4. أعمال حقن التربة وتثبيت التربة بالخرسانة المقذوفة والخوازيق الأبرية وتدعيم الطرق من الانهيارات الجبلية.
5. أعمال رفع المنشآت الخرسانية والمعدنية واستبدال مساند التحميل.

وذلك اعتباراً من تاريخ خطابنا هذا ولمدة سنة واحد (١٢ شهراً) شريطة التزامكم بالموصفات العامة للوزارة. علماً أنه في حالة عدم إلتزامكم بالموصفات فإنه سيتم وبدون سابق إنذار إلغاء اعتمادكم.

وتقبلوا أطيب تحياتي،،،

مدير عام الإدارة العامة لصيانة الطرق
تم اعتماد الخطاب إلكترونياً
المهندس/ عمر بن قربان نياز

MEMBERSHIP & CERTIFICATES



CERTIFICATE OF EXPERIENCE

To Whom It May Concern:

This is to certify that Eng. Ahmed El-Feel (Executive Manager at New Trading and Contracting) attended intensive training sessions and has obtained sufficient knowledge and professional experience while performing and overseeing various post-tensioning works for slabs, bridge decks & webs, silos, in addition to several other prestressing projects using OVM's post-tensioning system(s).

Eng. El-Feel is competent and fully capable of organizing, supervising and leading all phases pertaining to post-tensioning activities; installation, stressing and grouting.

We are confident that that he will be an asset and an added value to the "Dubtbat Intersection" Project.

This letter has been issued upon his request without any obligation to the company.

Best regards,




Yusuf R. Shaleby
Regional Manager
OVM Middle East & North Africa

Date: March 24th, 2013

OVM Middle East & North Africa
P.O.Box 42624, Sharjah, United Arab Emirates
Tel. + 97165264795
enquiries@ovm-mena.com ▲ <http://www.ovm-mena.com/>

MEMBERSHIP & CERTIFICATES



Calle Can Nadal s/n Nave 1-A
08185 Lliça de Vall
Barcelona – Spain

+34 938 63 42 50
mk4@mekano4.com
www.mekano4.com

Our reference: 181015 – MK4 GCC – JR
Date: 15th of **October**, 2018
To whom it may concern in KSA

Dear Sir,

Mekano4 is a European post-tensioning company based in **Barcelona (SPAIN)** with more than 26 years of experience in the field of **post-tensioning** in buildings and bridges, **pot bearings**, **Cable stay bridges**, **Bridge construction methodology**, **heavy lifting**, etc.

MK4 group has presence in more than **35 countries**. You may learn more about us in our website www.mekano4.com through LINKEDIN.

All our products have passed the most thoughtful test in order to assure the quality of the products installed in your country. The MK4 postensioning system is accredited by the **CE mark** and the European technical approval ETAG 013.

After 15 years of presence in the Middle East and with the aim to provide a premium service in the **KINGDOM OF SAUDI ARABIA**, we want to inform that the European postensioning system MK4 has signed an exclusive agreement with the company **NOOR CONTRACTING** last month of October 2018 for the Saudi Market.

In addition, we want to inform that the director for the Postensioning and Bridge Construction methodologies is **AHMED EL FEEL**, who a part of his wide experience in Postensioning, Bearings and Bridge Construction methodology, has received the training in our Headquarter in **BARCELONA**.

NOOR CONTRACTING, represented by **AHMED EL FEEL**, is the only authorized company that can promote, supply and install the MK4 system along the KSA.

We remain at your disposal for any clarification you may need.

Best regards,

MK4 World Wide, S.L.
Pol. Ind. Can Nadal
C/ Can Nadal, nave 1ª - 2
08185 LLIÇA DE VALL (Spain)
B-65392540
Javier Richart
COO of MK4 group
+34 659 057 058

SKY SPECIALIZED CO. LTD.

**Al Corniche Road,
Ash Shati District,
P.O. Box 10214, Jeddah 21433
Kingdom Of Saudi Arabia
Tel: + 966 126 949 974
Tel: + 966 126 990 162**

**Email :
info@skyspecialized.com
Website: www.**